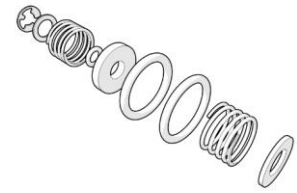


Ezy-Push™ Spare Parts Service Kit



PRODUCT CODES:

- 35634

SPECIFICATIONS

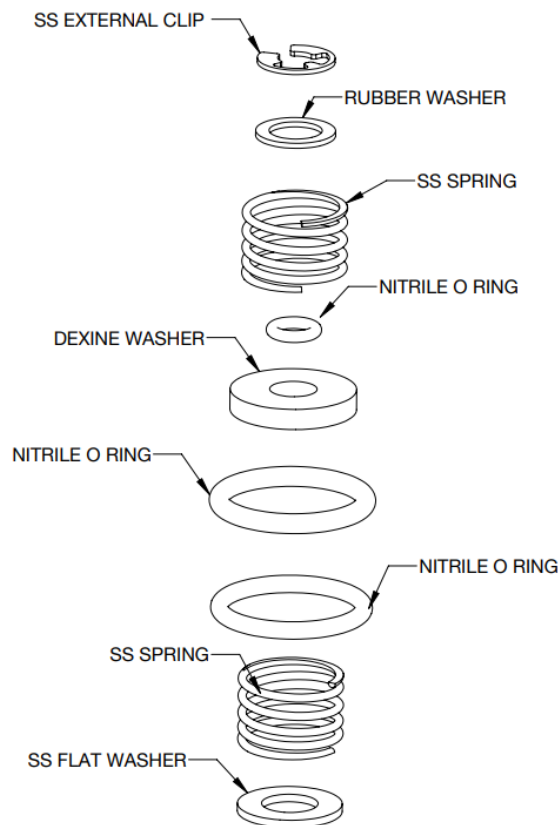
- Spare parts kit for servicing Ezy-Push™ tap range

TOOLS REQUIRED

- Allen key
- Adjustable Spanner

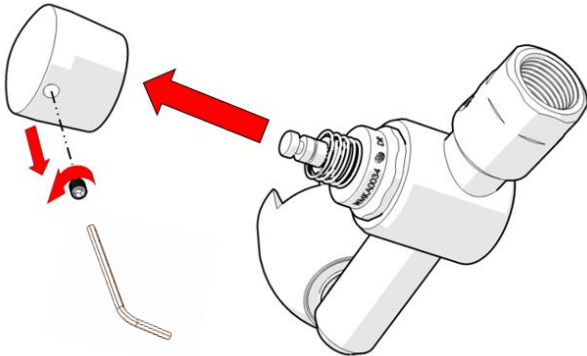
PRE-INSTALLATION

Note: Before disassembling the tap, ensure mains water is shut off.



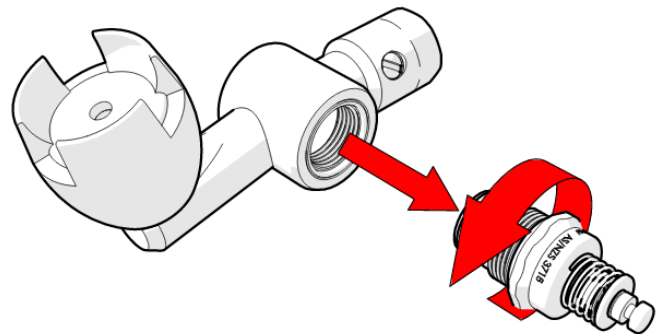
INSTALLATION

IMPORTANT: Galvin Specialised products must be installed in accordance with these installation instructions and in accordance with AS/NZS 3500, the PCA and your local regulatory requirements. Water and/or electrical supply conditions must also comply to the applicable national and/or state standards. Failing to comply with these provisions shall void the product warranty and may affect the performance of the product.



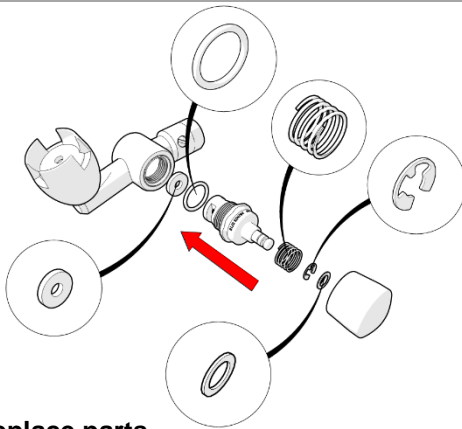
1. Handle Removal

- Once water supply is shutoff, remove push button handle using an allen key as shown.



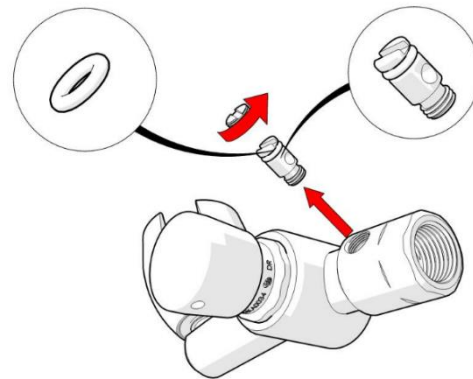
2. Top Assembly Removal

- Unscrew and remove top assembly as shown.



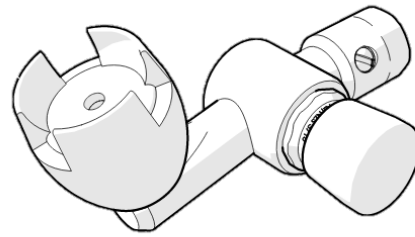
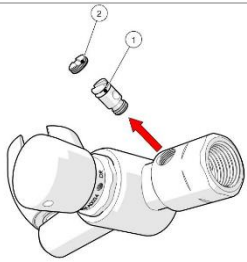
3. Replace parts

- Once the top assembly is removed, replace the serviceable parts as shown.
- After the parts have been replaced, fit the top assembly and button by reversing steps 2 & 1.
- An AS4020 approved grease such as Molykote 111 should be applied to all o-rings during installation.



4. Blanking screw removal and part replacement

- Remove blanking and regulating screw as shown.
- Grease new O-ring and fit to regulator screw. Fit regulator and blanking screw back to body
- An AS4020 approved grease such as Molykote 111 should be applied to all o-rings during installation.



5. Testing

- Once all parts are replaced, test for leaks and correct operation
- To adjust water flow
 1. Remove the blanking screw ②.
 2. Adjust the water height by turning the regulator screw ①.
 3. Once desired height has been achieved, replace blanking screw.

Note: The full range from minimum flow to maximum flow is only ¼ turn.

TROUBLESHOOTING

PROBLEM	CAUSE	RECTIFICATION
Button hard to press	Parts replaced incorrectly	Follow the installation steps above when replacing parts
Tap is leaking	Parts replaced incorrectly or grease not used on O-rings	Follow the installation steps above when replacing parts. An AS4020 approved grease such as Molykote 111 should be applied to all o-rings during installation

WARRANTY

The warranty set forth herein is given expressly and is the only warranty given by the Galvin Engineering Pty Ltd. With respect to the product, Galvin Engineering Pty Ltd makes no other warranties, express or implied. Galvin Engineering Pty. Ltd. hereby specifically disclaims all other warranties, express or implied, including but not limited to the implied warranties of merchantability and fitness for a particular purpose.

Galvin Engineering Pty Ltd products are covered under our manufacturer's warranty available for download from www.galvinengineering.com.au Galvin Engineering Pty Ltd expressly warrants that the product is free from operational defects in workmanship and materials for the warranty period as shown on the schedule in the manufacturer's warranty. During the warranty period, Galvin Engineering will replace or repair any defective products manufactured by Galvin Engineering without charge, so long as the terms of the Manufacturer's warranty are complied with.

The remedy described in the first paragraph of this warranty shall constitute the sole and exclusive remedy for breach of warranty, and Galvin Engineering Pty Ltd shall not be responsible for any incidental, special or consequential damages, including without limitation, lost profits or the cost of repairing or replacing other property which is damaged if this product does not work properly, other costs resulting from labour charges, delays, vandalism, negligence, fouling caused by foreign material, damage from adverse water conditions, chemical, electrical or any other circumstances over which Galvin Engineering has no control. This warranty shall be invalidated by any abuse, misuse, misapplication, improper installation or improper maintenance or alteration of the product.